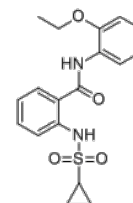


**Product Name** : ML382  
**Cat. No.** : PC-62122  
**CAS No.** : 1646499-97-9  
**Molecular Formula** : C<sub>18</sub>H<sub>20</sub>N<sub>2</sub>O<sub>4</sub>S  
**Molecular Weight** : 360.43  
**Target** : Other Targets  
**Solubility** : 10 mM in DMSO



## Biological Activity

ML382 is a potent, selective, positive allosteric modulator of Mas-related G protein-coupled receptor X1 (**MrgprX1**) with EC<sub>50</sub> of 190 nM in cell based Ca<sup>2+</sup> imaging assay.

ML382 displays >100-fold selectivity versus MrgX2.

ML382 enhances the ability of BAM8-22 to inhibit high-voltage-activated Ca<sup>2+</sup> channels and attenuates spinal nociceptive transmission.

ML382 effectively attenuated evoked, persistent, and spontaneous pain without causing obvious side effects.

ML382 attenuates both evoked pain hypersensitivity and spontaneous pain in MrgprX1 mice.

ML382 is an invaluable research tool to study the role of MrgprX1 in chronic pain.

## References

Wen W, et al. *ChemMedChem*. 2015 Jan;10(1):57-61.

Li Z, et al. *Proc Natl Acad Sci U S A*. 2017 Mar 7;114(10):E1996-E2005.

**Caution: Product has not been fully validated for medical applications. Lab Use Only!**

E-mail: tech@probechem.com